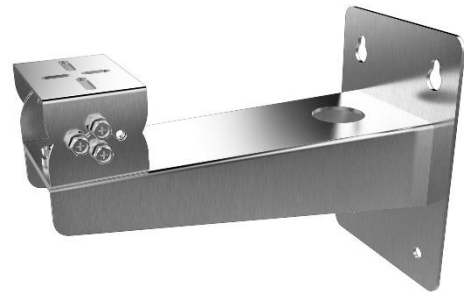


DS-1704ZJ

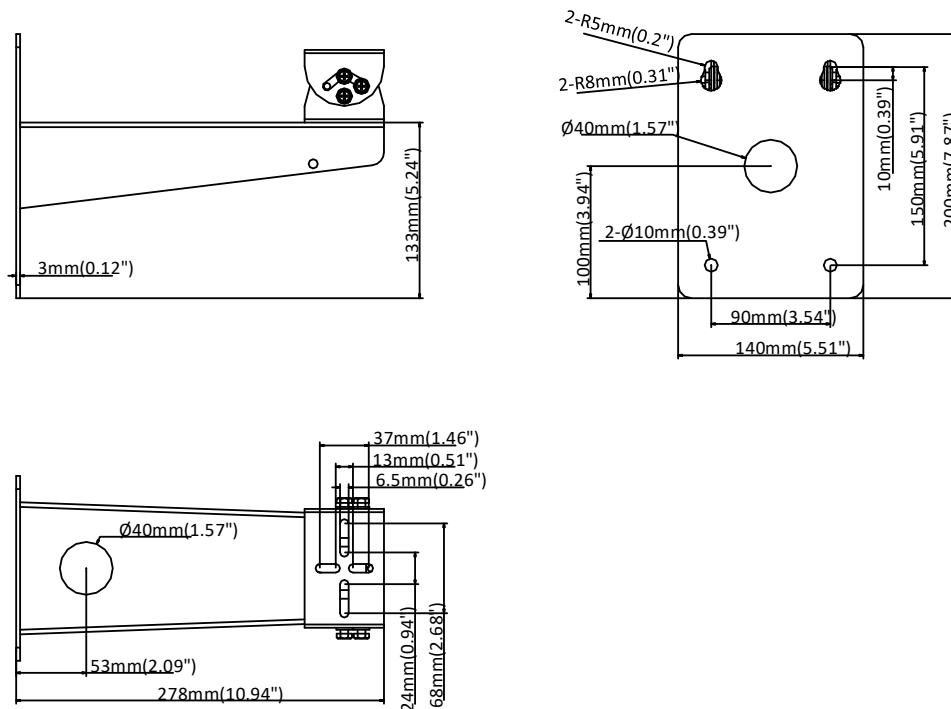
Wall Mount for Explosion-Proof Bullet Camera



Feature

- SUS304 Stainless steel
- Adjustable tilt angle from -45° to 45°, and pan angle from -45° to 45°
- Cable hole design facilitates the cable routing

Dimension



Available Model

DS-1704ZJ

Parameter

Model	DS-1704ZJ
Parameters	Wall Mount for Explosion-Proof Bullet Camera
Appearance	Natural Stainless Steel Color
Material	SUS304
Dimension	278 mm × 140 mm × 200 mm (10.94" × 5.51" × 7.87")
Weight	2160 g (4.76 lb.)

Note

- The mount should be installed on the flat surface.
- The wall must be capable of supporting at least 8 times as much as the total weight of the camera, and the mount.
- The mount's maximum load capacity is 10 kg (22 lb.).